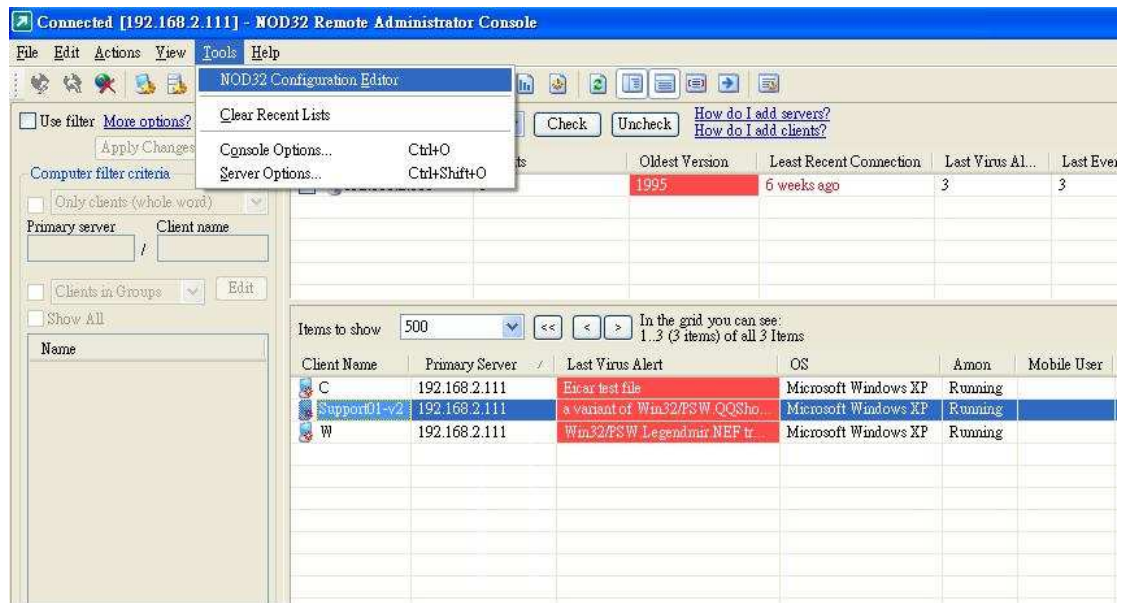


一般辦公室用戶 (e.g Sales, clerk)的配置設定
General Office user (e.g Sales, clerk) configuration setting

請先開啓工具,然後選擇 NOD32 配置修改器.

Please Click Tools -> NOD32 Configuration Editor.



如何設定 password 以防止別人更改你 NOD32 的設定
Setup the password to protect your setting of NOD32.

在設定參數防護的這裡剔上"是"

In lock setting and check the yes/no box.



在下面的那個鎖定密碼,按入設定密碼

Click the password to lock and click on the button of setup.

按入設定密碼

Click "setup" your password.



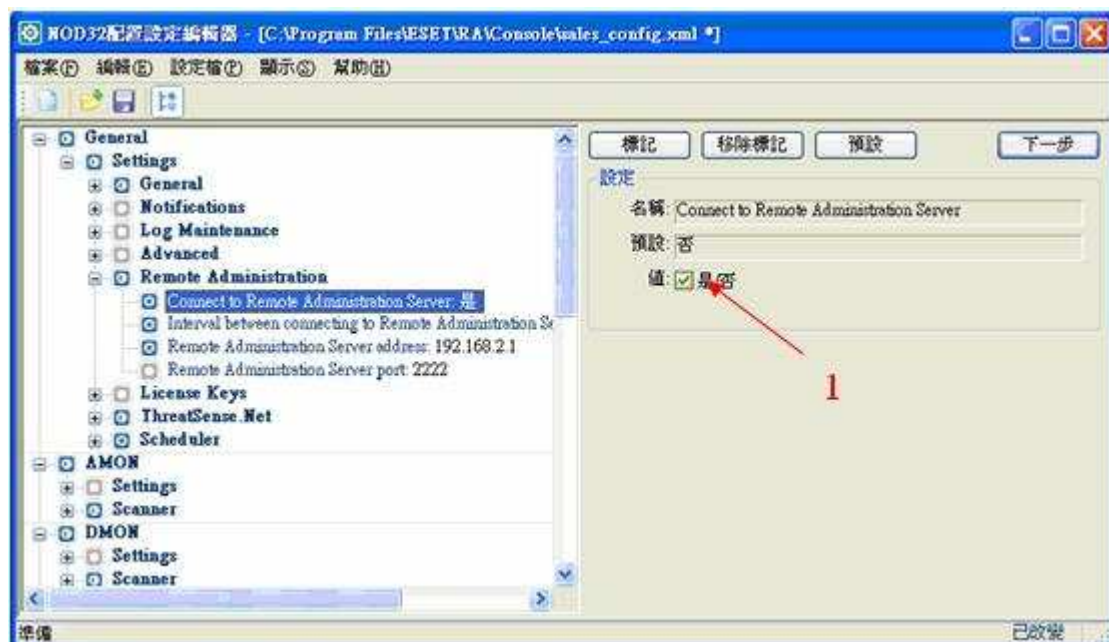
按入密碼

Enter your password.



如何設定連接遙控管理,先按"是",然後按入伺服器地址.再加上埠位.

How to set the remote administration, click the "connect to remote administration Server". Enter the Server Address (IP) and Port Number.

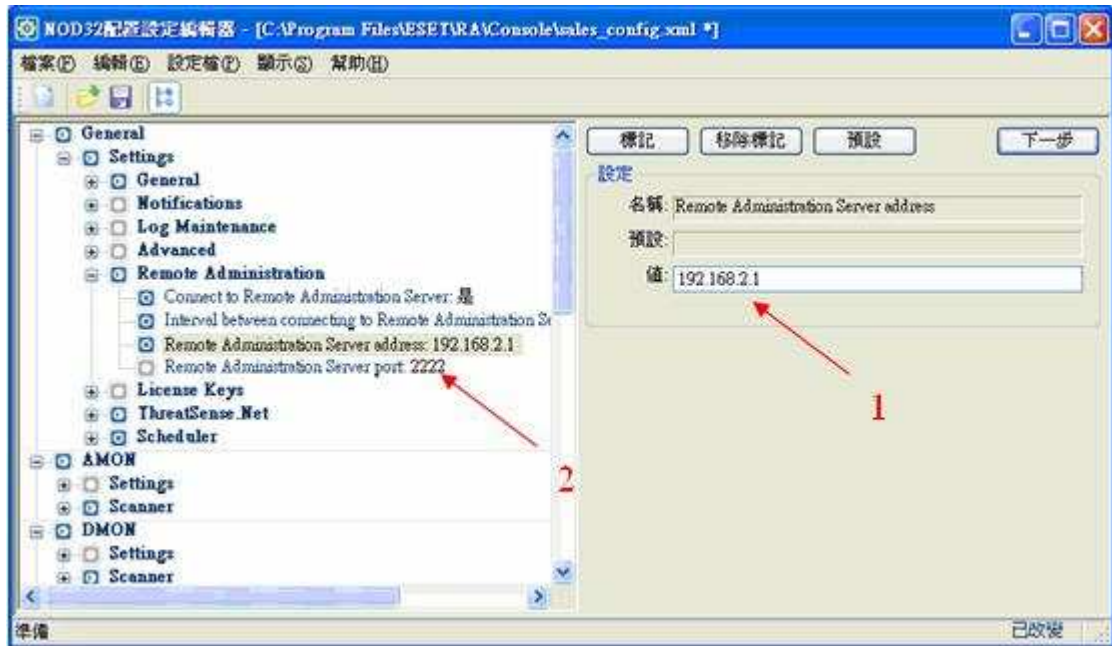


按入伺服器地址

click the "connect to remote administration Server". Enter the Server Address .

(2)輸入埠位

Enter the Port Number.



設定掃描器..

Setup the scanner

這個方法會掃描你的電腦,遇上病毒如不能清除會刪除及複製到隔離區

這裡會 threat sense 的掃描選項.這代表全選.



這是診斷的物件.

It is the objects to diagnose

(1) 這是選項

It is the option.

(2) 全部選擇別上"是"

Click the checkbox at all.



這裡是設定動作

(1)先剔起項目,然後選擇 clean 及 quarantine

Please choose clean and quarantine

(2) 選擇 none

Please choose none

(3) 選擇 replace

Please choose replace



如果不能清除的病毒,的動作選擇.

(1)先剔,然後選擇 delete 及 quarantine

Please choose delete and quarantine

(2) 選擇 none 及 quarantine

Please choose none and quarantine

(3) 選擇 none

Please choose none

(4) 選擇 replace

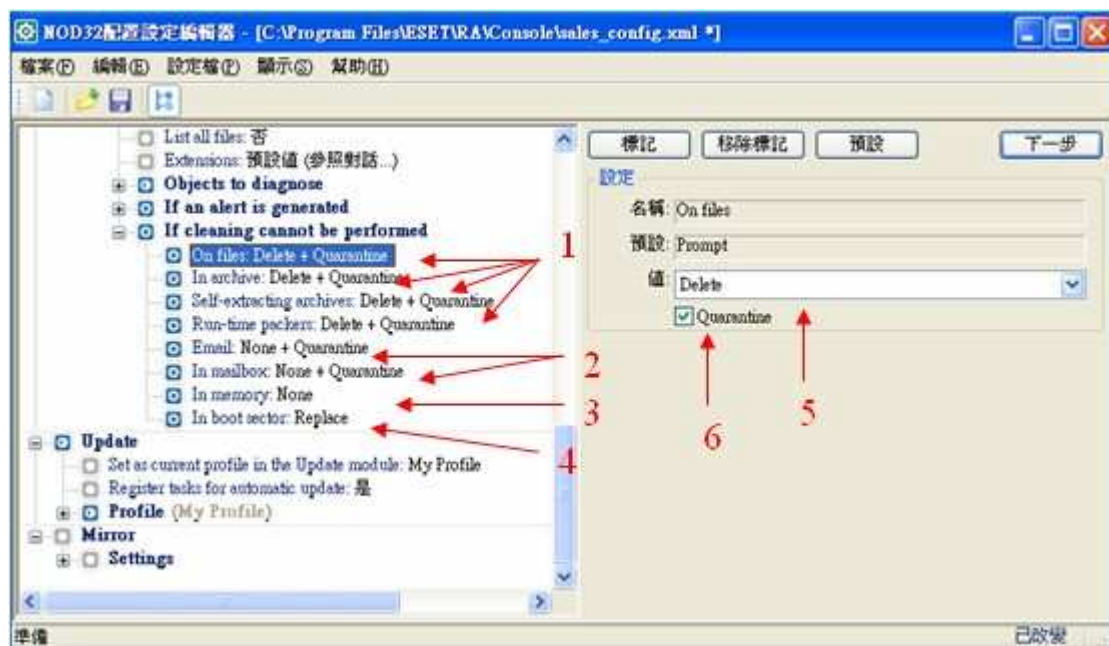
Please choose replace

(5) 選擇這個值

Choose the value.

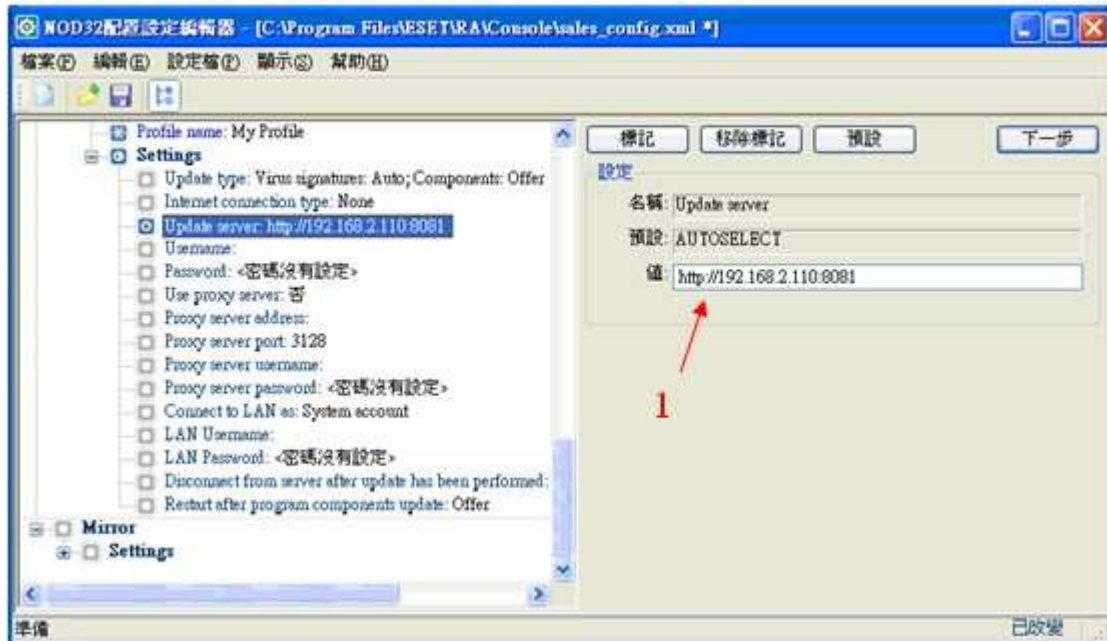
(6) 剔上複製到隔離區

Click copy to quarantine.

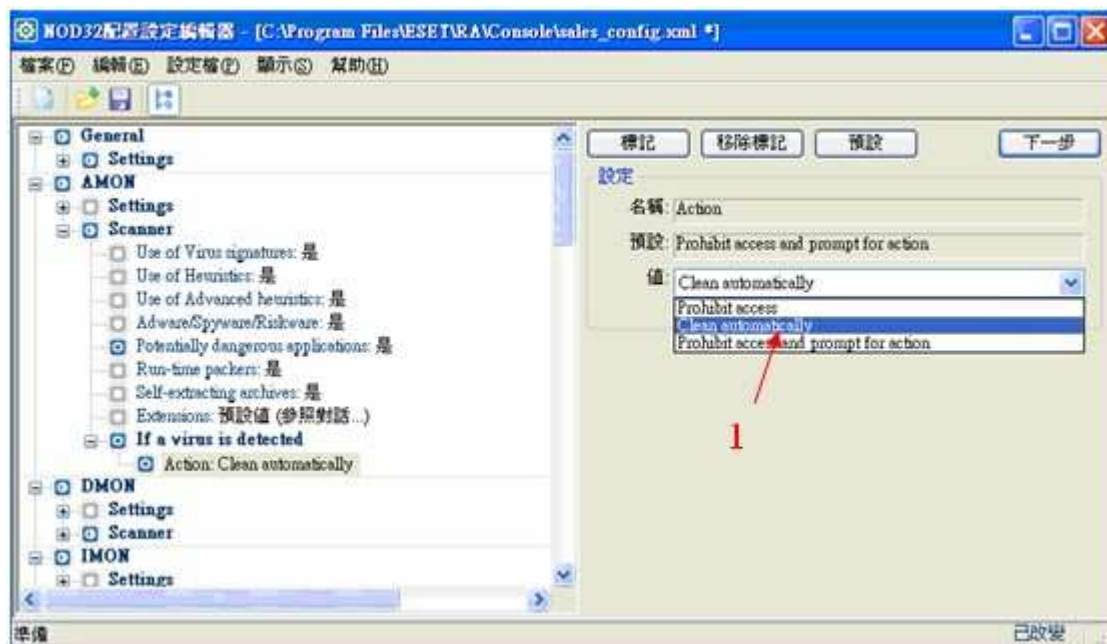


如何指向更新伺服器

(1) Enter your update server.



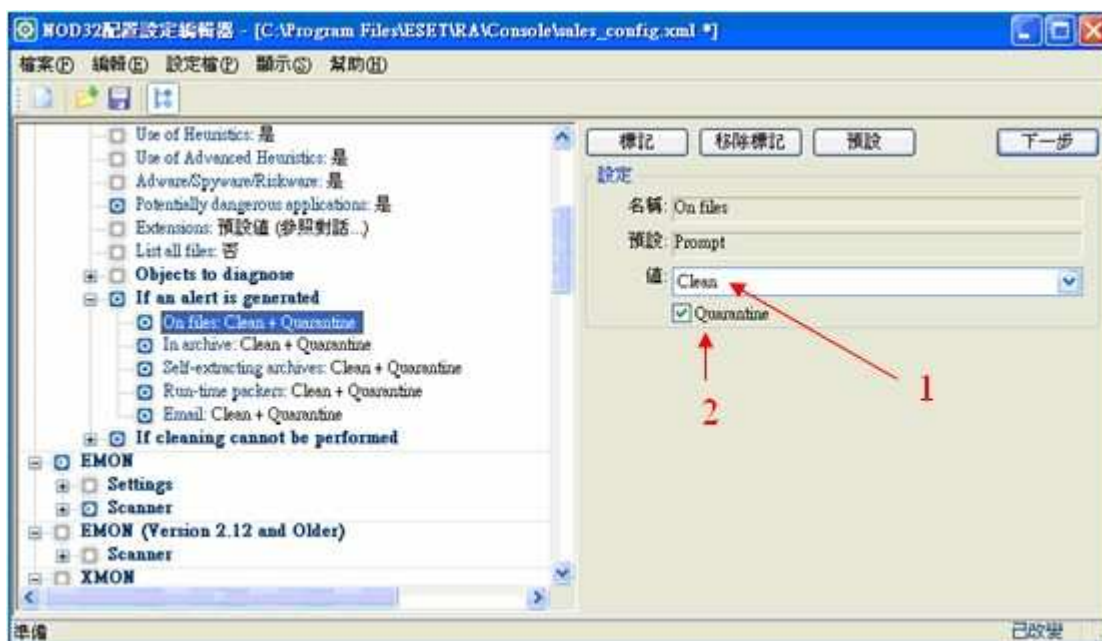
(1) 這是 AMON 如果出現警告,就會自動清除.
Choose "clean automatically "



這是 IMON,如果出現警告的設定,如果出現警告就會清除及複製到隔離區.
This is IMON , for the internet monitor. If alert is generated, please Click " clean "

- (1) 選擇 Clean
- Click " clean "
- (2) 剔上 Quarantine

Click " quarantine "



如果不能清除病就會刪除病毒及複製病毒到隔離區.

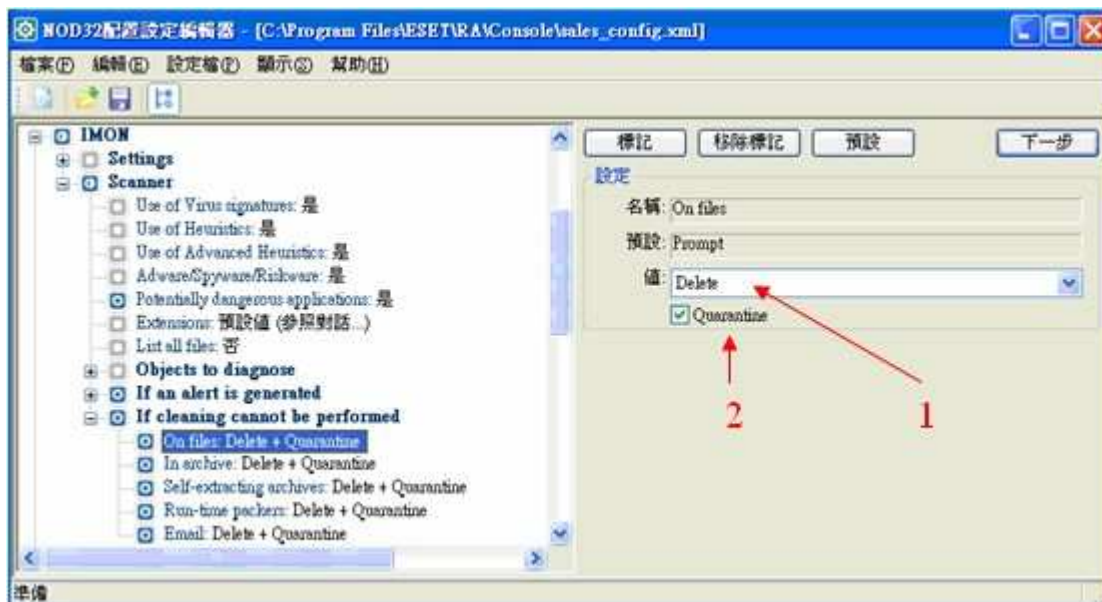
Please Click " Delete " and "Quarantine ".

(1) 選擇 Delete

Click " Delete "

(2) 剔上 Quarantine

Click "Quarantine ".



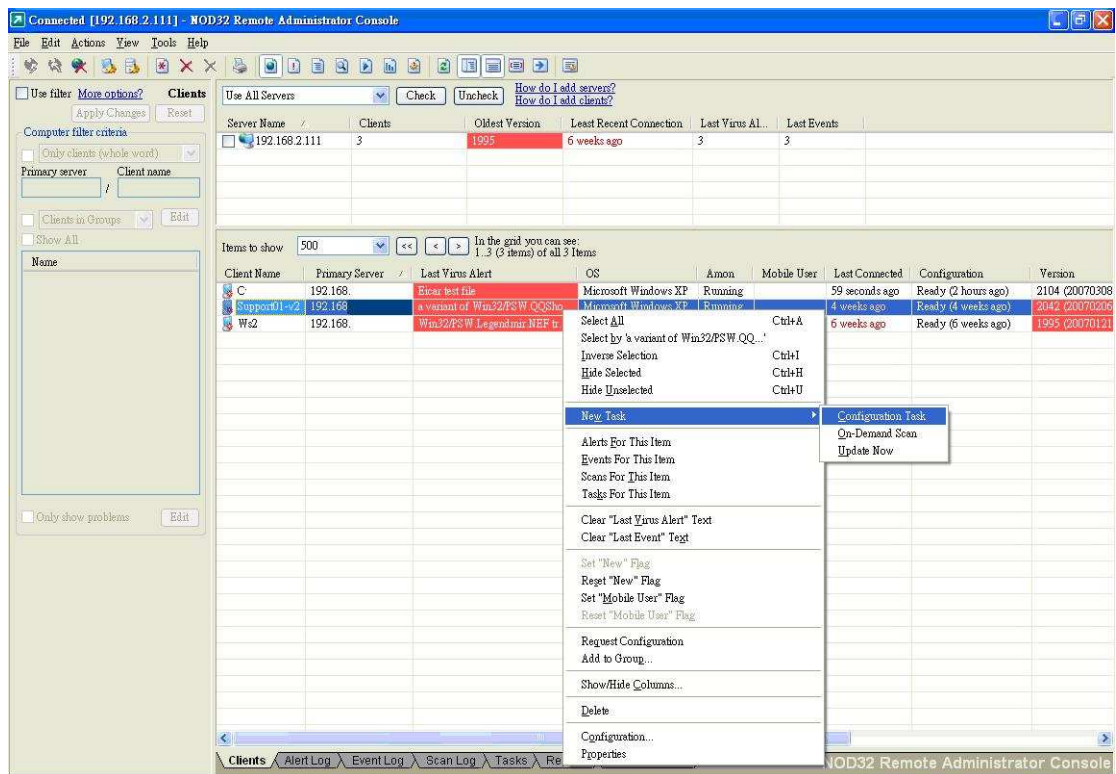
完成這些配置後,請儲存這個配置檔

After the setting of configuration, please save the configuration files.



先選擇想要變更配置的用戶,然後滑鼠右鍵選擇新工作,然後選擇配置工作.

Please select the user, then right click to choose “new task” and select “configuration task”.



你會看到如下圖所示,然後按選擇, 選擇你剛才所儲存的配置檔.

Please click “select” and then selected the configuration file.

